

SIMI ANNUAL REPORT 2018



ASSOCIATION
FOR INTEGRATION
AND MIGRATION

Association for Integration and Migration (SIMI)

Baranova 33

130 00 Praha 3

IČO 26612933

Bank account: 182096102/0300 (ČSOB, a.s.)

T: +420 224 224 379

M: +420 605 253 994

E: poradna@migrace.com

W: www.migrace.com, www.pracovnicevdomacnosti.cz

Facebook: SIMI (Sdružení pro integraci a migraci)

VK: Simi Poradna

Graphic design: Martin Málek

Translation: Alena Konečná

Proofreading: Anna Grušová

A WORD FROM THE DIRECTOR

Dear friends and supporters of SIMI,

as already many times before it is my pleasure to present what we in SIMI have achieved during the past year. Amid the heated discussions of politicians and social networks about whether we can and want to accept 50 Syrian orphans, we continued in our traditional activities. That is especially social and psychosocial counselling, our main service which is at the base of all our other activities. We drew from our experience in counselling during our advocacy work which focused especially on the amendment of the Act on the Residence of Foreigners. We tried to stop further unreasonable tightening of the law which would not lead to a better life of migrants in the Czech Republic. We also dealt with the topic of mental health of migrant women and we tried to identify what kind of health care is accessible for them and what could be done better. In terms of integration of migrants, we continued in our cooperation with three Czech regions and together we were looking for ways to strengthen the local integration policies. In 2018, we organized debates and workshops at schools where the students could meet migrants in person and learn about living in a new country.

Migration continued to be the topic of many discussions and populist statements of politicians, although the society's attention is slowly moving to other issues. So far, our country does not want to accept those 50 Syrian orphans despite the fact that there are families and individuals offering to provide accommodation and support. This shows that our society is losing its humanity which is being substituted by intolerance, hatred and fear. From our meetings with the migrants I know that their life here did not get better, but rather worse. As before, they have their daily worries while dealing with troubles at work, fighting with complicated laws they do not understand, having health, family or existential problems. Some of them feel very lonely in our society and they are still coping with migration traumas. However, more and more often they feel unwanted in Czechia and suffer from intolerance and xenophobia in their daily life.

We want to thank all volunteers, coworkers, colleagues and donors for supporting our work which, as we hope, contributes at least a little bit to improvement of the social discourse and the daily lives of the migrants in the Czech Republic.



Magda Faltová
Director



SUCCESSSES OF SIMI IN 2018

Community event, grammar school Pražské humanitní gymnázium, Let's talk together (about migration)

- We supported 1680 migrants regardless of their legal status.
- The Constitutional Court accepted the proposal of 18 senators and abolished some of the legal provisions of law on foreigners' residence. Together with the Consortium of Migrants Assisting Organizations we initiated this proposal and cooperated on its formulation.
- We achieved that female migrants and women with the experience of migration have become a part of the public discourse of women rights organizations and policy makers.
- We organized a study visit in Germany for the partners from the regional authorities and the Ministry of Labour and Social Affairs.
- We carried out a detailed research on integration of migrants in three regions.
- We have opened a public discussion on the topic of emotions and mental health of migrants; it was met with a high interest of the service providers.
- We organized debates and community events for 367 students at 7 schools.
- We supported dozens of teachers in teaching the topic of migration through trainings and methodological publications.
- We created tandems of 10 volunteers with our clients to help them practice Czech and improve their knowledge of the Czech environment.
- We organized 12 intercultural meetings and cooking workshops for Czechs and incomings which were attended by over 150 visitors.





COUNSELLING OF MIGRANTS

Community event, grammar school Pražské humanitní gymnázium, Let's talk together (about migration)

SIMI provides free counselling to all migrants regardless of their residence status:

The aim of our counselling is not only to help solve our clients' "problems" but also to help them to be able to understand the new environment as much as possible. We are convinced that supporting and strengthening their independence and legal awareness helps to reduce the risk of discrimination and social tensions, which they often have to face.

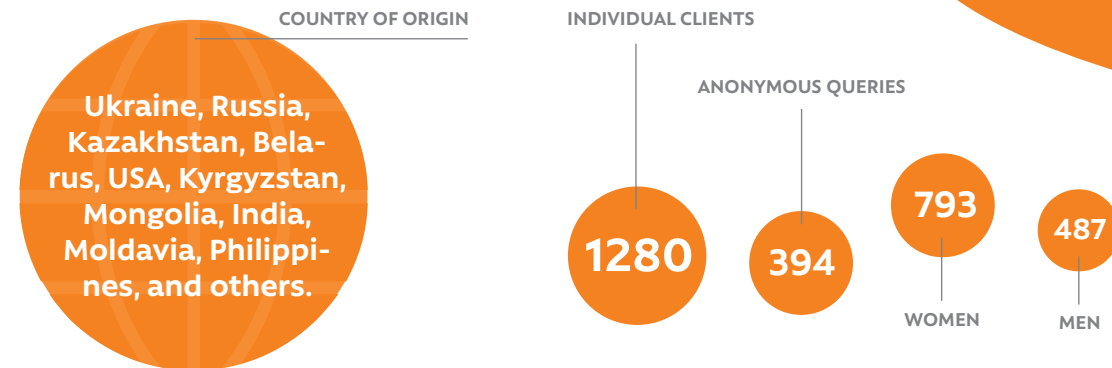
THE YEAR OF 2018

In most cases we are successful in establishing mutual cooperation with clients. After overcoming initial obstacles such as insufficient knowledge of the new environment or language barrier when in contact with competent persons, many of the clients are able to deal with various situations without help from the others.

We provide:

- legal advice
- social counselling
- psychosocial support
- services of intercultural workers

OUR CLIENTS





THE PLACES OF CONSULTATIONS

- the office of SIMI
- the Integration Center Prague
- in the field
- while escorting to the authorities, the doctor's or other institutions



LANGUAGES USED:

- Czech
- Russian
- English
- French
- German
- Mongolian
- Vietnamese
- Spanish
- Arabic

THE ISSUES WHICH WE HELP DEALING WITH

- staying in the Czech Republic
- obtaining citizenship
- international protection
- looking for employment, retraining courses
- Czech language courses
- housing
- education (available schools and kindergartens; degree validation, "nostrification")
- social support and help in material need
- health insurance
- loans
- work and family life balance
- not receiving wages
- unlawful termination of the lease and not returning the deposit
- pensions
- divorces
- psychological problems
- domestic violence

THE MOST USUAL TYPE OF RESIDENCE STATUS

- permanent residence
- temporary residence
- employee card
- long-term visa
- long-term residence permit for the purpose of family reunification
- residence for the purpose of study

WHAT WERE THE CLIENTS DEALING WITH? EXAMPLES OF OUR COUNSELLING

In 2018, there was an increased number of the cases of married migrants in psychosocial counselling who got into serious problems due to complicated partnerships.

TWO TYPICAL SITUATIONS:

1. A FOREIGN WOMAN – wife of a Czech man who lived with her without any problem in her country of origin (usually in Western Europe, USA or Asia). After moving to Czechia they live here together for several years, the wife does not work, but stays at home with children while the husband provides for the family. Because the wife is fully occupied with caring for their small children, she does not integrate sufficiently into the Czech society; often she does not learn any Czech and has friends only from the same language community. Problems arise when the husband finds a mistress or a new partner. The wife often does not understand the situation because in her country, divorces are not as common as in the Czech Republic. She cannot cope psychologically with the situation, she cannot return to her country with the children who feel to be Czech, and to make a living on her own in Czechia is very complicated for her without the knowledge of the language and environment.

2. A WIFE OR A PARTNER OF A MIGRANT MAN, herself a migrant (usually from one of the countries of the former USSR). The partner has a long-term or a permanent residence permit in Czechia and is an entrepreneur. The wife has a long-term residence permit for the purpose of family reunification or she is without any residence permit, often for many years. She looks after small children, does not integrate, usually does not speak Czech, and she completely depends on her husband. The husband in many cases abuses the situation, forces his wife to a life she would not be willing to lead in normal occasion, sometimes even uses domestic violence. Due to her problematic residence status, the wife is afraid to ask the authorities for help and finds herself in an almost insoluble situation.

In both cases, the clients who are often unaware of their rights receive help not only from a psychosocial counsellor but also from social and legal counsellors. Together we help them to get through the complicated situation and to find other organizations besides SIMI which specialize on problems they have to face.

ADVOCACY ACTIVITIES AND MEMBERSHIP IN NETWORKS



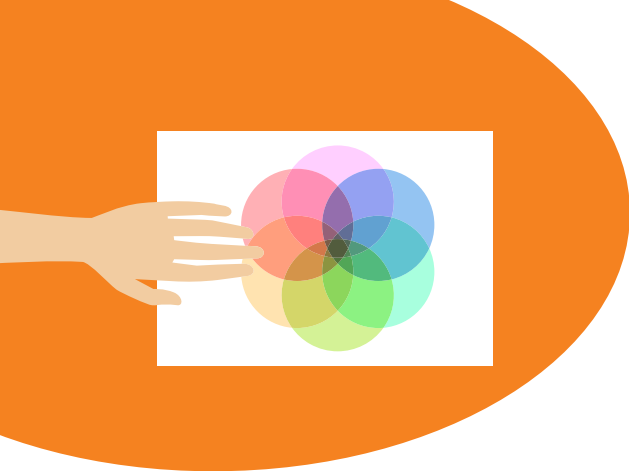
Round table on the topic *The role of the second generation of Vietnamese in the integration process of the Vietnamese community, Cities and inclusive strategy*

- In the long term, we participate in shaping and influencing the migration and asylum legislation of the Czech Republic, and the public policies related to the integration of migrants.
- We point out the intersecting dimensions of integration, in general on local level and also in particular in relation to gender equality or aging issues.
- We contribute to the development of integration strategies and advocate for active involvement of municipality and regional authorities in the integration process of migrants.
- We submit initiatives on local or systemic changes, publish expert articles, and join statements, petitions and campaigns of other organizations or platforms.
- Overall, we strive for better and more favorable conditions for migrants' lives in the Czech Republic.
- We are active in the Government Council for Human Rights' Committee for the Rights of Foreigners and in a number of working groups on migration and integration issues.
- As a member of many national and European human-rights networks we participate in formulating migration and integration policies; more recently also policies concerning gender equality issues.

SIMI IN NETWORKS

- Consortium of Migrants Assisting Organizations (the Consortium) – member of the Executive Committee
- Czech Women's Lobby (CWL) – member of the Executive Committee
- Platform for International Cooperation on Undocumented Migrants (PICUM) – member of the Administrative Committee
- European Network Against Racism (ENAR)
- European Network of Migrant Women (ENoMW)
- Research Network for Domestic Workers' Rights (RN-DWR)
- European Association for Local Democracy (ALDA)
- Pro Bono Alliance – member of the Executive Committee





SIMI IN ADVISORY BODIES

- Integration of Foreigners Committee of the Prague City Council
- Integration of Foreigners Regional Advisory Platform of Prague
- Committee for the Rights of Foreigners (within The Council of the Government of the Czech Republic for Human Rights)
- Committee for Institutional Security of Equality of Women and Men (within the Government Council for the Equality of Women and Men)
- Committee for Reconciliation of Work, Private and Family Life (within the Government Council for the Equality of Women and Men)
- Working Group on Economic Migration (within The Ministry of Industry and Trade)

WHAT HAVE WE ACCOMPLISHED

- We submitted comments on the amendment of the Act on the Residency of Foreign Nationals and we succeeded to make several changes.
- Together with the Consortium we have joined the debate on accepting of the UN Global Compact.
- We have opened a public discussion with experts on the topic of emotions and mental health in migration.
- We have submitted 3 suggestions for solving the issue of female-migrants' status at non-legislative level.
- We supported the development of multi-level cooperation and active participation of local authorities of cooperating regions in the implementation of the innovative project Cities and inclusive strategy (see details below).
- We organized dozens of meetings with various policy makers and key actors.



CITIES AND INCLUSIVE STRATEGY

Currently, SIMI is coordinating the Cities and inclusive strategy project with the cooperation of the Center for Social and Economic Strategies (Faculty of Social Sciences, Charles University), Multicultural Center Prague and other partners from the Liberec region, South Moravian region and Prague. The aim of the project is to develop integration policies on local level with the active involvement of municipalities and regions, and to shape them so that they reflect the needs of migrants in each local community better.

In 2018, in the frame of this project:

- We made a detailed **research on the situation of the integration of migrants** in 3 cooperating regions.
- We organized a **study visit in Germany** for the partners from the regional authorities and the Ministry of Labour and Social Affairs.
- Together with the Viet Up association we opened a discussion on **How difficult is it for the second generation of Vietnamese to succeed in the Czech Republic?**
- During the 10th Integration Crossroads Conference, we organized a workshop on **Systemic support of local authorities and cooperation in integration of foreigners dealing with integration of foreigners in municipalities.**
- We debated at **8 round tables** with the actors of integration on various topics connected with integration of migrants and development of integration strategies.
- We shared experience and best practices in integration of migrants with the **Saxon State Minister for Gender Equality and Integration** during her visit in Prague.

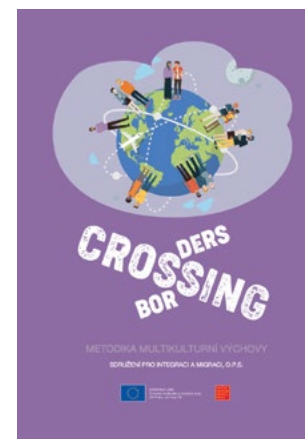
INFLUENCING THE PUBLIC



Community event, grammar school Pražské humanitní gymnázium, Let's talk together (about migration)

EDUCATIONAL AND AWARENESS EVENTS ABOUT WOMEN IN MIGRATION

- **3 public debates about the documentary film Ženy od vedle** - RefuFest, BarCamp NESEHNUTÍ, Akcent na migraci in Archa theatre
- **Panel discussion** "Communities for Equality" at NESEHNUTÍ BarCamp
- **Movement workshop** for female migrants about dealing with emotions with Mexican performers from La Lleca collective.
- **Intercultural meeting** about coaching program for female migrants "Osobní start-up" (Personal start-up)
- **Specialized seminar** "Emotions and mental health in migration" for intercultural and social workers from NGOs dealing with migrants.
- **Contributions to academic conferences and specialized events:** Charles University in Prague, University of Hradec Králové, Comenius University in Bratislava, University of Wrocław, People in Need, The Public Defender of Rights, Institute of Sociology of the Czech Academy of Sciences, French Embassy in Prague, Philippine Embassy, The Office of the Government of the Czech Republic, etc.
- **Lectures at summer schools and seminars for Czech and US university students**
- **Happening** "Tancem proti násilí" (Dancing against violence) with the Czech Women's Lobby and others



INTERCULTURAL MEETINGS

In 2018, we continued with the regular Intercultural meetings of foreigners and locals, which are friendly discussions on topics which we share. Apart from the usual thematic evenings, we had main guests coming from other countries who shared their life stories – arrival to Czechia, gradual integration into Czech society and getting used to the environment or experience with getting involved in local business and educational activities. After their presentation there was an open discussion with other participants who could also share their experience with life in Czechia. Popular tastings were also organized, where all participants could bring some typical goodie from their home country and present its preparation to others. You may find the recipes on our website www.interkulturelnisetkani.cz.

PARTICIPANTS

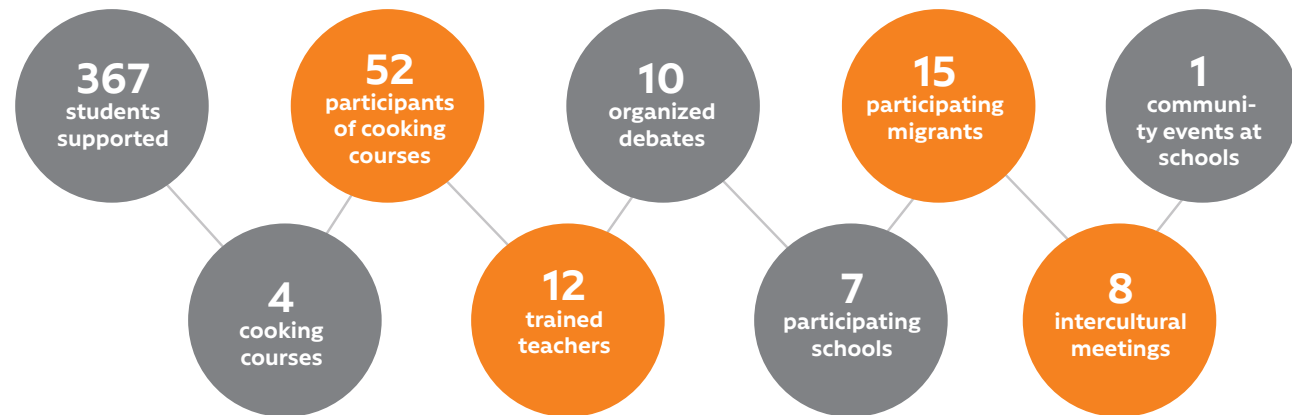


COUNTRIES



LET'S TALK TOGETHER (ABOUT MIGRATION) AND CROSSING BORDERS

- **Debates at schools** - with the Let's talk together (about migration) and Crossing borders in Prague projects we organized discussions on migration and refugee issues at schools in Prague. A guest migrant participated in the discussions, sharing their personal story and experience of arriving to and living in the Czech Republic. The debates included also workshops prepared by lecturers from Zvolsti.info who explained the students what disinformation and hoaxes are and how to defend themselves against them.
- **Community event** - together with the **grammar school Pražské humanitní gymnázium** we organized the event Let's talk together (about migration) where migrants from e.g. Mongolia, Democratic Republic of Congo, Ukraine or Mexico prepared for the students workshops about culture and interesting facts about their countries.
- **Training for teachers** - at the grammar school Pražské humanitní gymnázium we prepared training for the teachers where they were able to learn about the current migration and refugee issues in the Czech Republic and abroad, and how to work with students speaking a different mother tongue.
- **Cooking classes** - under the supervision of migrants from Mexico, Kazakhstan, India and Vietnam, the participants tried goodies from various places around the world, and learned to prepare some of the dishes. You may find the recipes on our SIMI Foodblog on collectible cards together with the stories of our „chefs” - <http://foodblog.migrace.com/>.



PUBLICATIONS AND MEDIA

- Input analysis **“Dostupnost péče pro migrantky a migranty v ČR” (Accessibility of healthcare for migrants in the Czech Republic)** - at the website of SIMI www.migrace.com (section Integration/Migrant women among women)
- **Databases of available research on mental health of people with migrant experience** - on request from SIMI
- **“Integrace cizinců v Česku z pohledu nevládních organizací”** (Integration of foreigners in the Czech Republic from the perspective of non-profit organization) - published by the Consortium of Migrants Assisting Organizations, chapters 2,5, and 7 are written by SIMI), on the website of the Consortium <http://www.migracnikonsorcium.cz/>
- **Methodological publications Methodology of Educational Workshop for Educators and School Staff and Methodology of Multicultural Education including other methodological worksheets** - materials suitable for teaching about migration created in cooperation with teachers from Prague schools, available to download at the website of SIMI www.migrace.com (section Integration/Trainings for teachers)
- **Blog Bez vrásek (Wrinkle free Blog)** - blog stories of mostly female migrants in the Czech Republic, tips on interesting events, articles on migration, issues at <http://bezvrasek.migrace.com>
- **Foodblog SIMI** - recipes with stories of migrants from all over the world and collectible cards with recipes and specialties from their countries, see here <http://foodblog.migrace.com>
- **“Gender v migraci” (Gender in Migration) newsletter** - news about our activities, events in the Czech Republic and Europe, www.migrace.com (section Integration/Migrant women among women)



Cooking of Vietnamese cuisine, Crossing borders in Prague

PEOPLE IN SIMI

Intercultural and social workers, *Blog bez vrásek (Wrinkle free Blog)*, *Migrant women among women 2018 - Emotions and health*

EMPLOYEES

Directors

Magda Faltová, *Director*

Pavla Hradečná, *Program Director*

Legal Department

Klára Holíková, *Head of the Legal Department*

Kateřina Matulová, *Lawyer*

Peter Chmeliar, *Lawyer*

Barbora Kostecká, *Lawyer*

Social Department

Pavel Duba, *Head of the Social Department*

Anna Darašenka, *Social Worker*

Vlada Makhinová, *Social Worker*

Eva Vojtová, *Social Worker*

František Cihlář, *Psychosocial Worker*

Intercultural workers

Dinara Akhmetová

Natallia Allen

Mónica Márquez Bobadilla

Mayada Elhissy

Otgon Erdene Erdenebat

Marianna Kuzmowych

Ngo Quynh Nga

Marina Pojmanová

Van Anh Tranová

Viktoría Valeeva

Jana Magdaléna Vlastníková

Chima Youssefová

Experts

Eva Čech Valentová, *Expert in International Cooperation & Project Coordinator*

Kateřina Dederová, *Coordinator of volunteers & Public Relations*

Simona Králíková, *Project Coordinator*

Marie Konrádová, *Social Geographer*

Marie Jelínková, *Sociologist*

Petra Ezzeddine, *Expert in Equal Opportunities*

Goranka Oljača, *Media Expert*

Petr Kučera, *Social Geographer*

Filip Pospíšil, *Foreign Affairs Expert*

Selma Muhič, *Sociologist*

Lucie Kulhavá, *Expert in South Moravian Region*

Elena Tulupova, *Methodologist and Expert in Health and Migration*

Financial Department

Petr Veselý, *Financial Manager*

Hana Kniha, *Accountant*

Jana Hořejší, *Payroll Accountant*

Board of Directors

Vladan Brož, *Chairman*

Jan Ruml, *Member*

Anna Grušová, *Member*

Pavla Hradečná, *Member*

Markéta Hronková, *Member*

Dana Němcová, *Member*

Supervisory Board

Daniela Bednářiková, *Chairman*

Jiří Kniťl, *Member*

Růžena Kulhánková, *Member*



VOLUNTEERS AND INTERNS

Volunteers and interns helped us with a number of activities:



We acknowledge:

Lenka Kader Aghová, Yomna Ahmed, Markéta Babková, Valentina Batueva, Barbora Báštěcká, Hana Blažková, Petra Blažková, Zuzana Brožová, Daria Černostová, Jana Doláková, Iva Francová, Klára Hájková, Klára Herčíková, Marie Horniecká, Vladan Hruška, Veronika Janůrková, Jana Kándl, Petr Kolář, Alena Konečná, Alena Konvalinková, Lukáš Kraina, Kristína Lehutová, Veronika Marečková, Aneta Marchioniová, Lenka Martinková, Miriam Moutouk, Bolor Naranbaatar, Dagmar Palmer, Adéla Prokšová, Lenka Stoklásková, Monika Šamová, Jiří Šolc, Pavlína Vávrová, Jana Veselá, Mária Veselá, Helena Vopatová, Fred Henry Williams, Jana Žalská

ACKNOWLEDGEMENTS FOR SUPPORT

For financial and material support, we are grateful to:

Radka Bohuslavová, Kamil Hubert Guzik, Martin Málek, Michal Falta, Markéta Hronková, Jana Konečná, Jakub Machek, Lubomír Majerčík, Dana Moree, Michal Lojek, Martin Illner, Marek Čaněk, Kristýna Chvojková, Zdeněk Pinc, Dominika Kratochvílová, Marek Čaněk, Karin Kempf, Jan Zderadička, Monika Hansson Tutter, Vladyslav Kobec, Petr Musil, Jana Křížová, Jiří Urban, Pekárna Kabát, Avast.

ACKNOWLEDGEMENTS FOR COOPERATION

For their support and cooperation in the activities of SIMI, we appreciate the following institutions and individuals:

Akademické konferenční centrum, Server Abkerimov, Marwan Alsolaiman, Ahsan Aslam, Vladimír and Radek Baštovi, Barbora Bendová, Café Lajka, Café Therapy, Erika Čičmanová, Kateřina Čížková, Jagarmaa Dagvasuren, Fair Food Club, Mina Halilovič, Paul Ndjadi Homeamba, Ivo Charitonov, InBáze, Integration Centre Prague, The South Moravian Regional Centre for the Support of the Integration of Foreigners, Limy Joseph, Lukáš Kosek, authorities of the region of Liberec, Elmira Lyapina, Lucie Lukavská, Lela Kukava, Prague City Council – Division of National Minorities and Foreigners, Martin Málek, Lenka Martinková, Zvezdana Marković, Helena Masníková, Lorena Mendéz and collective, La Lleca, Stanislav Miler, Ministry of Labour and Social Affairs, Multicultural Center Prague, NESEHNUTÍ, Ngo Quynh Nga, Minh Mai Ngoc, José Luis Paz, Vesna Peulić, Marek Procházka, Fatima Rahimi, Sagar Rakin, Tünde Rakytková, Maxim Semenchukov, Skautský institut, Jiří Šolc, Jan Tichý, Isabella Torez, Charles University, Ms. Uranbileg, Zvolši.info.

PROJECTS

- Helping hand
- Migrant women among women 2018 – Emotions and health
- Cities and inclusive strategy
- Crossing borders in Prague
- Integration Centre Prague VI
- Crossing borders
- Volunteers in SIMI
- Through integration against hatred!
- Building fair migration policy in the Czech Republic



FINANCIAL REPORT

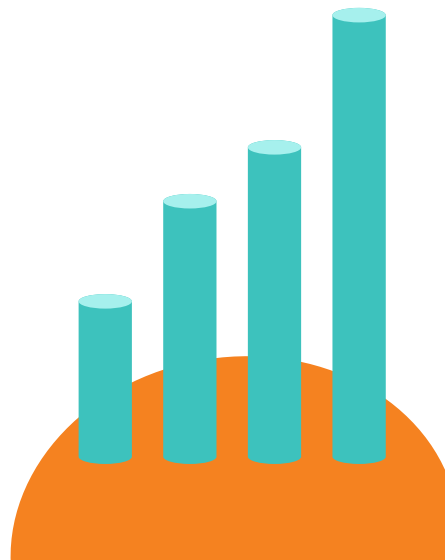


Community event, grammar school Pražské humanitní gymnázium, Let's talk together (about migration)

OPERATING SUBSIDIES IN 2018 IN CZK

Name of the donor	Amount in CZK
Open Society for Europe (OSIFE)	298 114
Asylum, Migration and Integration Fund	840 512
Prague City Council	1 812 169
Embassy of Canada in Prague	95 000
European structural and investment funds - ESI (Operational Programme Prague - Growth Pole of the Czech Republic)	1 059 274
European structural and investment funds - ESI (Operational Programme Employment)	4 391 674
Government of Czech Republic	854 045
Ministry of Interior	39 702
Municipal District Prague	52 857
Total	9 443 347

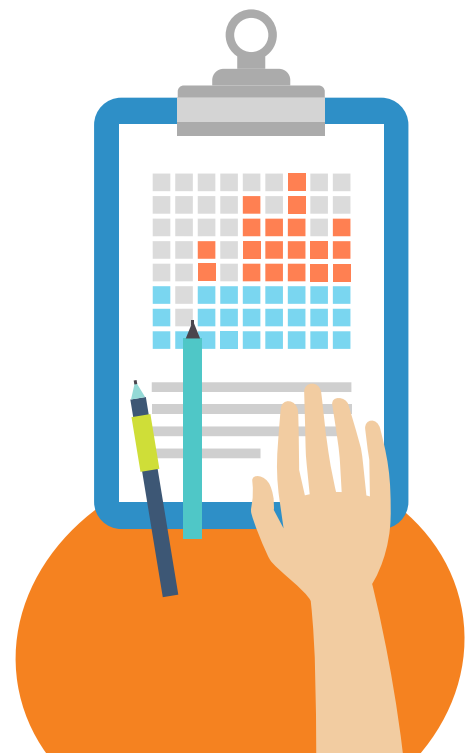
Expenses	Amount in th. CZK
Materials consumed	38
Repairs and maintenance	0
Travel expenses	34
Representation expenses	0
Other services	1 761
Salaries	6 021
Social and health Insurance	1 906
Other taxes and fees	0
Other fines and penalties	0
Loss on exchange rate	0
Other expenses	130
Provided member contributions	13
Total expenses	9 903



Revenues	Amount in th. CZK
Sales of services	97
Interests	1
Other revenues	1
Received contributions	339
Operating subsidies	9 443
Operating subsidies	9 881

PROFIT (LOSS) -22

Assets	status as of 1 January 2018 in th. CZK	status as of 31 December 2018 in th. CZK
Assets	64	64
Software	35	35
Accumulated depreciation-software	-35	-35
Royalties	64	64
Tangible assets under CZK 10,000	73	73
Accumulated depreciation tangible assets under CZK 10,000	-73	-73
Current assets	6 798	6 497
Subscribers	1	0
Operating advances	1 202	2 206
Demands for subsidies and other settlements with state budget	0	0
Demands for subsidies and other settlements with authorities of the territorial self-governing unit	17	0
Other receivables	211	219
Estimated accounts active	0	0
Cash register	30	29
Bank accounts	5 304	4 010
Pre-paid expenses	33	33
Accrued Income	0	0
Total assets	6 862	6 561



Liabilities	status as of 1 January 2018 in th. CZK	status as of 31 December 2018 in th. CZK
Own resources	653	631
Own assets	1 009	1 009
Funds	1	1
Accounts based on profits	0	-22
Profits from approved processes	218	218
Retained earnings, accumulated losses from previous years	-575	-575
Liabilities	6 209	5 930
Suppliers	24	24
Advances received	936	1 308
Other liabilities	6	6
Payables to the state budget	4 616	3 707
Liabilities for social security and health insurance	196	222
Other direct debts	49	63
Payables to the authorities of the territorial self-governing unit	0	188
Another liabilities	375	411
Accrued Expenses	7	1
Total Liabilities	6 862	6 561

PROJECT WERE SUPPORTED BY



Government of Canada
Embassy of Canada

Gouvernement du Canada
Ambassade du Canada



EVROPSKÁ UNIE
Evropské strukturální a investiční fondy
OP Praha - pól růstu ČR



Evropská unie
Evropský sociální fond
Operační program Zaměstnanost



FINANCOVÁNO
EVROPSKOU UNÍÍ
AZYLOVÝ, MIGRAČNÍ
A INTEGRAČNÍ FOND



MINISTERSTVO VNITRA
ČESKÉ REPUBLIKY

Úřad vlády České republiky

